



ANALOG WAY®

## QUICK START GUIDE

Orchestra - Ref. ORC50

Thank you for choosing **Analog Way** and the **Orchestra**. By following these simple steps, you will be able to setup and use your powerful High End Remote Controller within minutes. Discover the **Orchestra** extensive capabilities and intuitive interface while configuring your first show, and unleash your creativity for a new experience in show and event management by **Analog Way**.

### What's in the box

- 1 x Orchestra (ORC50)
- 1 x Power supply cord
- 1 x Console mounting bar and screws
- 2 x Adjustable feet
- 1 x User Manual (PDF Version) \*
- 1 x Quick Start Guide \*

\* Download on our website: [www.analogway.com](http://www.analogway.com)



### Orchestra settings

Before starting with ORC50, please see the following steps:

- Front Panel Description
- Setting up the ORC50
- Configuring the show.

If connecting the Orchestra and device directly, be sure to use an Ethernet crossover cable, otherwise you can use a standard ethernet hub and straight cables.

The ORC50 automatically detects if the connected devices are running the correct firmware version.

To program a preset, use the following steps:

- #1- Select a Screen #1 to #6
- #2- Create a layer by "Preset Edition" section
- #3- Select a source
- #4- Save the configuration of the Screen in a Preset.

=> Restart the steps #1 to #4 if several Screens are associated to a Preset.

#### Specific commands:

- For saving a Preset with black content, you must save an empty Preset.
- Short press on a preset: loads the saved preset and saved screen selection.
- Long press on a preset: loads the saved preset on only the currently selected screens
- For clearing a Preset (Memory): Save To Preset => Confirm the reset of the preset on the touch screen. The check boxes are not automatically checked by the software.

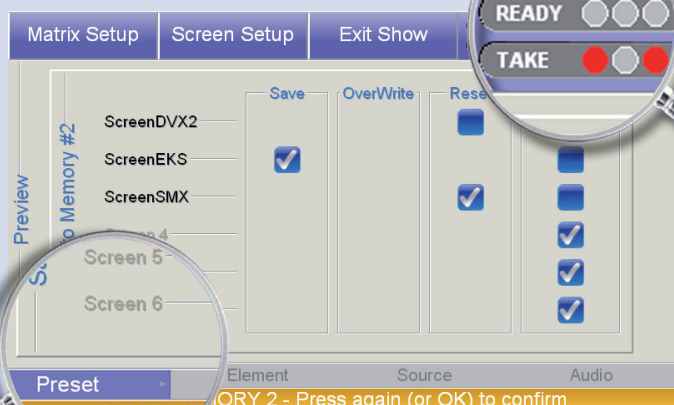
The operator must confirm the action of erasing.

**Status Bar (upper right corner of the screen).**  
**Each Screen is represented as a circle:**

- Ready Status Bar
  - Grey dark circle: No device Configured
  - Grey light circle: Device not connected
  - Yellow circle: Initializing and synchronizing device
  - Green circle: Device connected and ready for operation.
- TAKE Status Bar
  - Grey dark circle: No device
  - Grey light circle: Screen unselected, no action scheduled
  - Red circle: The Main is different from Preview. The screen will change after a Take.

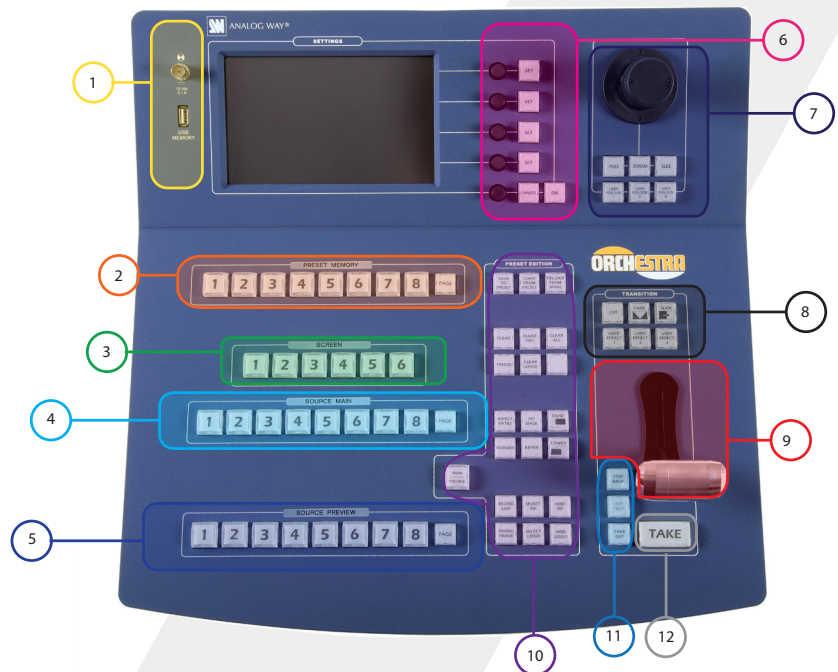
#### Navigation bar (bottom of screen):

The Navigation bar shows your current page, and is also a shortcut to the listed menu pages.



## Front Panel Description

Please to refer to User Manual for comprehensive explanations



- 1
- > BNC for desk light
  - > USB Port for show file management and firmware upgrade



> Each time you configure a screen (background, PIPs, logos), you can save it to a Preset Memory for future use. To do this, configure a screen with all the desired elements, press the **SAVE TO PRESET** button and then a preset memory button.



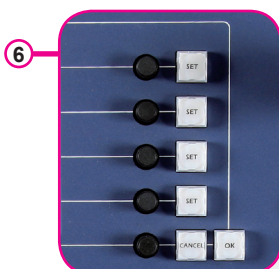
> Screen selection



> **Source Main:** Status only.



> **Source Preview:** select your sources. It will appear preview output of your switcher and press **TAKE** to go live on your Main output.



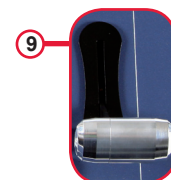
> **Settings:** allows you to access all of the Orchestra menus and functionalities quickly and easily. The 4 top rotative knobs will allow you to set values, while the last knob will allow to navigate through the interface, to access source or element settings for example.



> **Joystick** for easy adjustments (position or size). Adjust the selected PIP or Logo, X-Axis (Left/Right), Y-Axis (Up/Down).



> Selection of Effects and User Effects.



> **T-Bar** to control effect level.



> **Preset Edition:** Save, load and modify presets. Various layer properties are also available in this section.

> **CLEAR ALL** button: delete all effects selected.

> Please refer to our user manual for all the functions in this section.



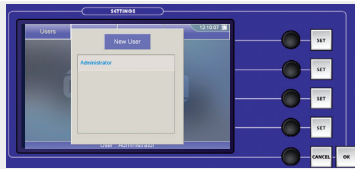
> 3 functions associated with **TAKE** and **T-BAR**:

- STEP BACK - short press activates the Step Back function
- STEP BACK - long press to enable/disable the PRESET TOGGLE function.
- **INIT T-BAR**
- **TAKE CUT**



> Press the **TAKE** button to display the pre-selected sources onto the MAIN output with the selected effects.

## Setting up the Orchestra



### User configuration:

On startup, the **ORC50** tactile screen will display the *User* page. The first time you use the **ORC50**, you will have to create a new user.

- 1/ Press the **New User** button on the tactile screen
- 2/ Name the new user as required and press the **[OK]** button to validate your choice. Press **[OK]** to skip password creation.
- 3/ On the *User* page, choose the user you just created, and press the **[OK]** button. The **ORC50** will display its default menu screen.



### System configuration:

- The **ORC50** System Configuration page lets you adjust properties like the IP address of the **ORC50**.
- 1/ Press **System** on the tactile screen. The Network Configuration tab will be displayed.
  - 2/ Select the **Lan Settings** option, rotate the corresponding knobs to change the IP address of the **ORC50** (IP1,2,3,4) or press the <Default> button to restore the address to 192.168.0.15. Press the **[OK]** button to validate
  - 3/ Press **[OK]** again to Exit the system page.

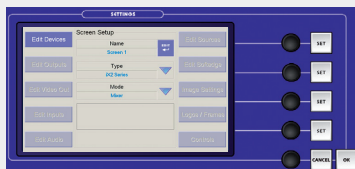


### Show configuration:

When starting with the **ORC50**, you will need to create a new show.

- 1/ Press the **Shows** button on the tactile screen then "Create a New Show" button.
- 2/ The **ORC50** will display the *Show Edit* Name screen, you can now enter a new name. Choose a name for your show, then press the **[OK]** button to validate your choice.
- 3/ The **ORC50** will display a blank show page.

## Configuring the show

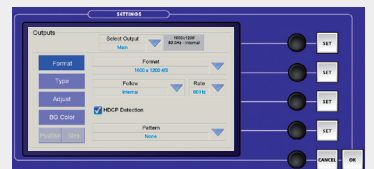


To run a **show**, follow these few steps:  
**Screen setup:**

- 1/ Select a Screen in the Screen section of the **ORC50** by pressing one of the six available buttons. The *Screen* page will appear on the **ORC50** tactile screen.
- 2/ Press **Screen Setup** on the tactile screen.
- 3/ On the <Screen Setup>, select the slave device type and mode. Press **Edit** to rename your screen.

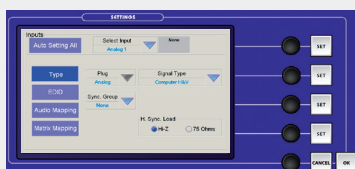


- 4/ Press **Edit Devices**. **Add Device**. Using the tactile screen, Configure the communication settings of the device that the ORC50 will control.
- 5/ Press the **[OK]** button to validate your changes. The ORC50 will begin connecting to the configured device.
- 6/ Press the **[OK]** button to return to the *Screen Setup* page.



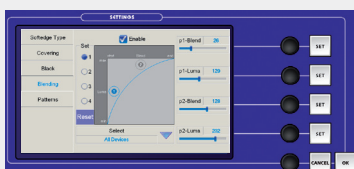
### Output configuration:

- 1/ In the *Screen Setup* page, press **Edit Outputs** and select the output, Main or Preview, you wish to adjust, then configure the output format (resolution), output rate, output type required.
- 2/ Press **Pattern**, and select an available pattern to check your output settings on screen. Press **Pattern** again, and select **None** to revert to your image on screen.
- 3/ Press the **[OK]** button to return to the screen setup page.



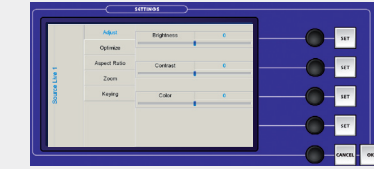
### Input configuration:

- 1/ In the *Screen Setup* page, press **Edit Input**, you can manually configure each input by selecting it and then select the input you wish to work on, the type of plug, the signal type or press the **[AUTOSETTING]** button, for an automatic setup of your inputs.
- 2/ Press **[OK]** button.



### Soft Edge setup:

Please refer to the Soft Edge Setup Chapter of the User manual.



### Image settings:

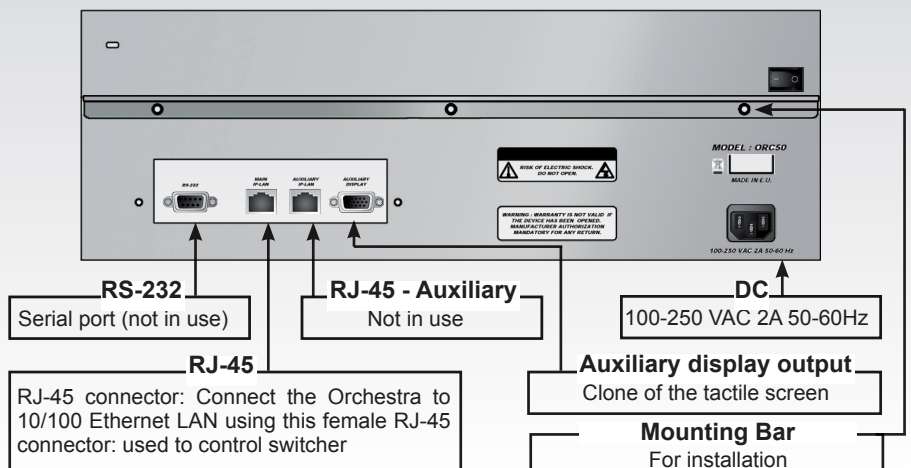
In the screen setup page, to access source image settings, press the **[IMAGE SETTINGS]** button.



### Logos & Frames configuration:

- 1/ In the screen setup page, press the **[LOGOS/FRAMES]** button.
- 2/ Select a source you wish to use as a logo or frame.
- 3/ Choose the memory slot to save the Logo/Frame into, edit size, position with the joystick, and the keying settings by rotating the appropriate knobs.
- 4/ Press **[STORE]** to store your logo or frame.

## Rear Panel Description



## Working with the Orchestra

### Layers:

Backgrounds, frames, PIPs, and logos are all considered layers.

To work with a layer, press the [BACKGROUND LIVE], [BACKGROUND FRAME], [ADD PIP] or [ADD LOGO] button.

In the Source Preview section, select the source you wish to assign to that layer. It will appear on the Preview output of your slave device. Press [TAKE] to go live on your Main output.

Selected objects can be moved or resized with the help of the joystick.

Any selected object can be cleared by pressing the [CLEAR] button twice (to clear multiple layers, press [CLEAR PIPs], [CLEAR LOGOs] or [CLEAR ALL], twice).

Source parameters of the selected layer can be accessed via the options on the last line of the tactile screen or via the 5<sup>th</sup> knob.

### The TAKE button:

The [TAKE] button will bring everything you have configured, from your Preview output to your Main output.

The **Orchestra** T-Bar makes the same transition, but you can manually control the progress of the effect.

The [TAKE CUT] button allows you to override all transition effects with a cut effect.

Finally, the [STEPBACK] button will revert your main output to its previous screen state. Press the [STEPBACK] button and press [TAKE] to do this.

### Preset Memories:

Each time you configure a screen (background, PIPs, logos), you can save it to a Preset Memory for future use, then call it back at any time.

To do this, configure a screen with all the desired elements, and press the [SAVE TO MEMORY] button.

In the Preset Memory section, choose the memory slot you wish to save to by pressing a button (#1 to #8).

To recall that memory and use it, press the [LOAD from PRESET] button, press a Preset Memory button and press [TAKE].

**TIP :** pressing the [PAGE] button while selecting a Preset Memory (#1 to #8), will select a memory page, each containing 8 memory slots (64 in total).

## Managing with the Orchestra

The **Orchestra** can control the following Seamless Switchers:

Control Mode	DVX8044	EKS500	EKS400	OPS300	OPS200	SMX200	SMX100	PLS300	PLS200	SVU300	SVU200	STE100	SQD200
Seamless Mixer	x	x	x	x	x			x	x	x	x		
Seamless Matrix	x	x	x	x		x	x						
Quadravision		x											x
Soft Edge Blending	x											x	

## Warranty

All **Analog Way** products have a 3 year warranty on parts and labor, return to factory, but do not include faults resulting from user negligence, any unauthorized modifications, electrical surges, mishandling (drop/crush), and/or any other damage caused by misuse.

Please note: The included carrying case and protective foam is not covered under warranty.

## Going further with the Orchestra

Please check the User Manual and our website for further information: [www.analogway.com](http://www.analogway.com)